

The Cliffs Resort Overview

Located just 75 minutes west of Fort Worth, The Cliffs Resort is nestled within the Palo Pinto mountain range and boasts three miles of prime shoreline along Possum Kingdom Lake. The Cliffs Resort, sitting majestically atop steep cliffs, high above the lake's crystal-blue waters, will mesmerize you by the dramatic views of the lake and remarkably beautiful terrain.

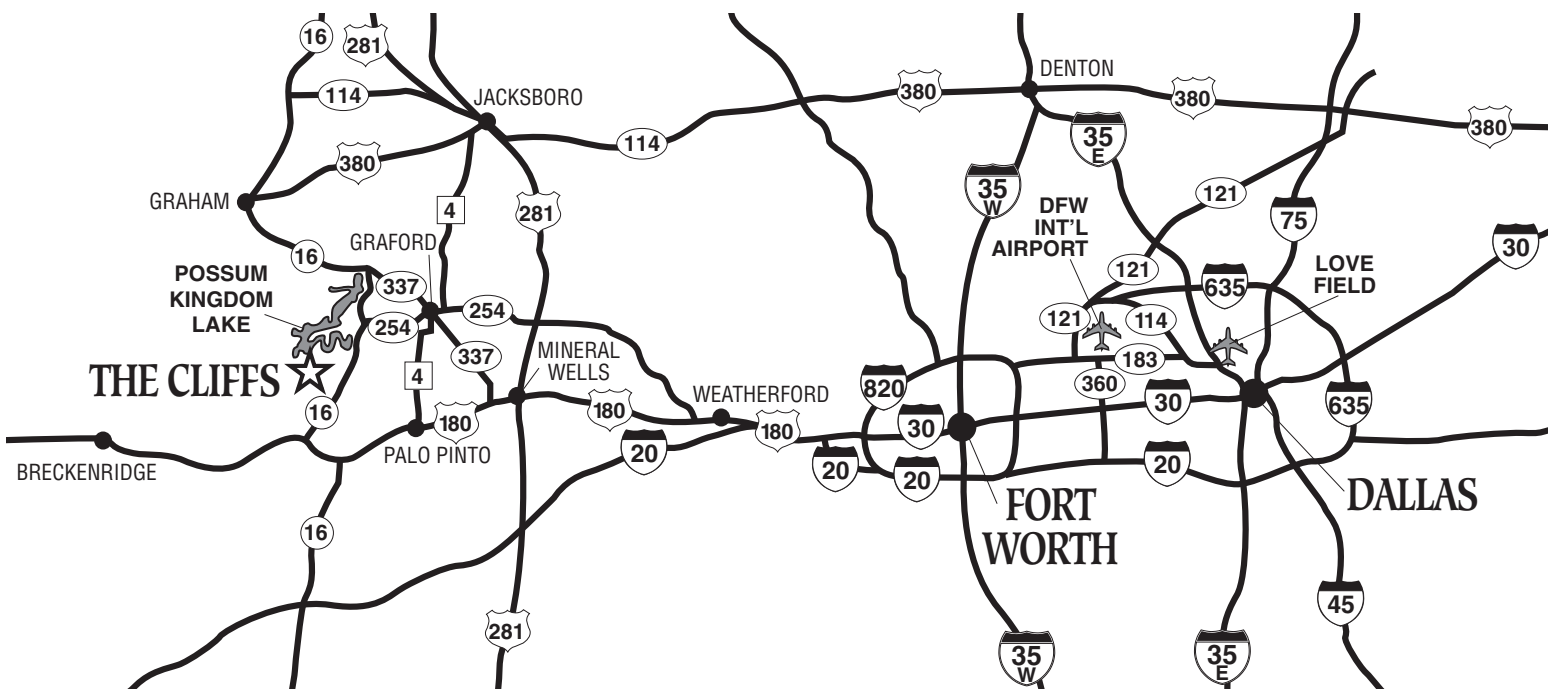
This idealistic 1090-acre haven has grown into a magnificent resort community of private residences, overnight lodging, a conference facility, a full service spa, a private marina and much more. The Cliffs Resort has a legendary golf course, which year after year continues to receive top rankings. The 18-hole course is one of the most challenging and spectacular courses in all of Texas.

Guests and residents alike enjoy the stunning setting and abundant recreational amenities such as swimming, golf, tennis and lake activities, just to mention a few. Whether you are planning a weekend getaway, an exciting family vacation or a business retreat for your organization, The Cliffs Resort provides an ideal setting.

Resort Location

Directions from Dallas/Fort Worth Metroplex: From Dallas/Fort Worth, take 1-20 West. Exit 180 at Weatherford. Continue west through Mineral Wells and Palo Pinto to Brad. Take Hwy. 16 North. The Cliffs is 7.5 miles on the left.

Directions from Wichita Falls: From Wichita Falls, take 281 South. Exit Hwy. 16 South through Graham and continue south for approximately 30 miles (two miles south of the Brazos River bridge. The Cliffs will be on the right.



THE CLIFFS RESORT ON POSSUM KINGDOM LAKE

(800) 324-7438 Ext. 9887 • e-mail groupsales@ddresorts.com • www.thecliffsresort.com

The Cliffs Meeting Facilities

The Conference Center at The Cliffs Resort has been the destination selected by many organizations for business meetings, training seminars and executive retreats. The Cliffs Resort caters to small-to medium-size business meetings. According to corporate meeting planners, the most significant reasons for choosing The Cliffs Resort are its close proximity to the Dallas/Fort Worth Metroplex, excellent meeting facilities, the 18-hole championship golf course and a friendly, professional staff. Furthermore, planners give high ratings to the sleeping accommodations, spectacular spa facilities, relaxed atmosphere and the superb cuisine. Capture your participants' full attention by conducting a meeting at the Conference Center, and combine recreational activities such as a golf outing or fishing expedition to create a memorable experience.

The 3,500-square foot conference center has 1,800 square feet of versatile meeting space in a facility separate from the Inn, providing clients with a quiet space to focus on the business at hand. Step outside the meeting room onto the grand outdoor terrace for a short break and to enjoy a view of Possum Kingdom Lake. The Cliffs Resort offers full-service facilities in a beautiful, relaxed setting, with a professional, attentive staff to ensure your meeting's success. Our on-site Group Sales Manager will be happy to take care of all the arrangements, down to the last detail.

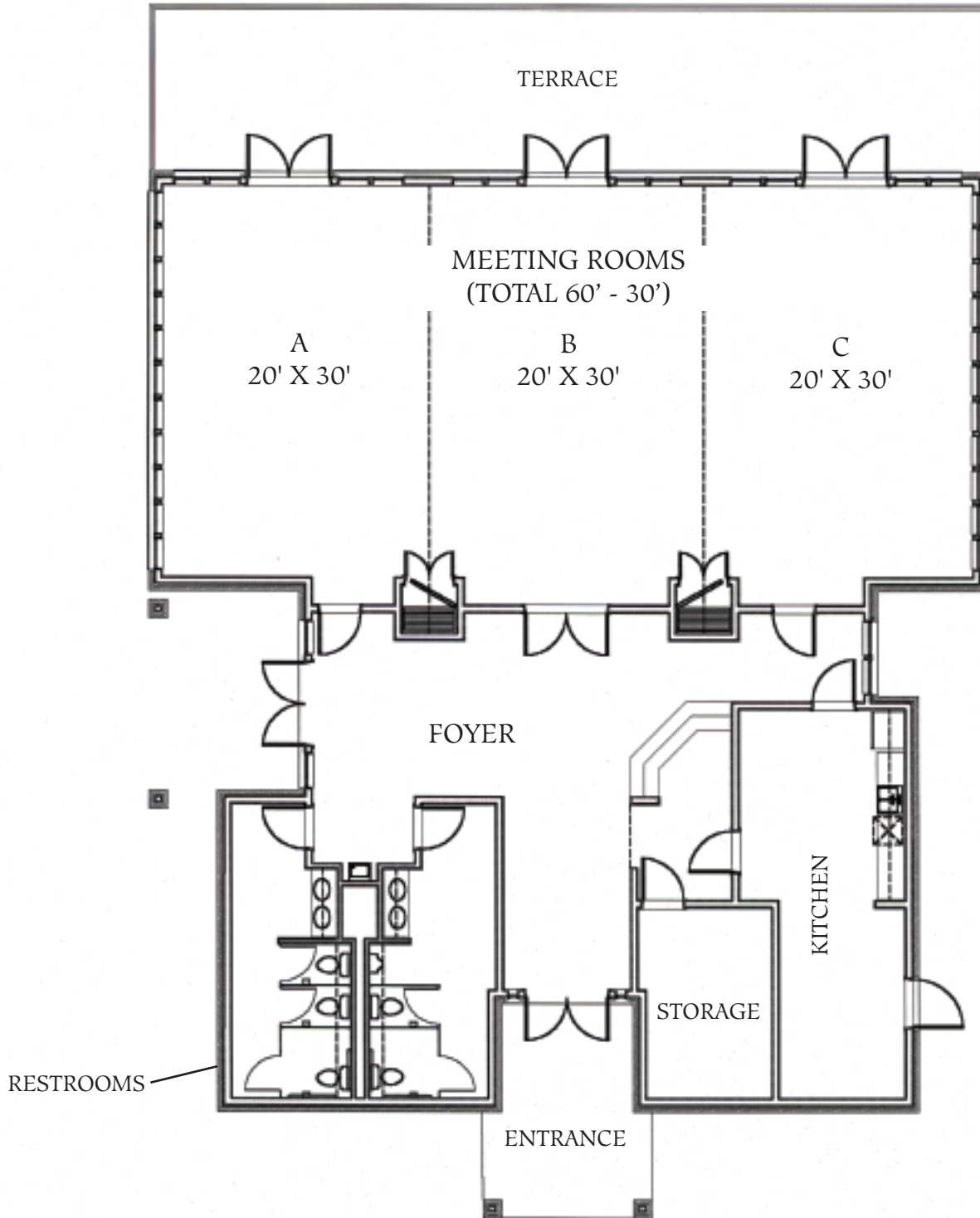
Conference Center & Banquet Specifications

- 3,500-square foot conference center with 1,800 square feet of functional meeting space, catering facility and restrooms.
- Ability to utilize indoor meeting space as one 60' x 30' room or three 20' x 30' rooms divided by airwalls; 11' high ceilings.
- Over 700 square feet of adjoining outdoor terrace space.
- The center's foyer may also be utilized to set up food and beverage service.
- Selection of additional audiovisual equipment is available for rental.
- Complete Meeting Packages (CMP) are available and include room accommodations, conference setup, three meals per day, morning and afternoon refreshment service, audiovisual equipment and an on-site Conference Coordinator. Specifications and rates available upon request.
- Wireless internet access available.
- The on-site Conference Coordinator organizes and executes all of your meeting's details, and will be happy to assist with planning a group golf outing, fishing expedition, or other recreational activity.
- Additional meeting space is available for smaller groups in our Sunrise Room located next to The Chaparral Grill, as well as the Pro Shop Boardroom.
- Also on premise are two covered outdoor pavilions for private gatherings. The pavilion has electrical service, picnic tables and an oversized barbecue pit. The adjoining swimming pool may be reserved as well.
- Group transportation coordination is available through the Group Sales Manager.

(See Reverse for Diagram)

MEETING ROOM CAPACITY

Conference Center	125 people
Sunrise Room	42 people
Pro Shop Boardroom	50 people



Corporate Meeting Package

Package Includes:

Overnight Accommodations
Breakfast, Lunch, Dinner
Continuous Beverage Service
Deluxe Snack Breaks
Meeting Room
Standard Audiovisual Equipment

(Wireless Internet, 2 Flip Charts, Overhead Projector, Screen, TV/DVD and NEC LCD Projector)

APRIL 30, 2012 - NOVEMBER 4, 2012

Weekday

\$256 Per Person, Per Day
Single Occupancy

\$193 Per Person, Per Day
Double Occupancy

Weekend

\$277 Per Person, Per Day
Single Occupancy

\$225 Per Person, Per Day
Double Occupancy

Food and beverage gratuities included. All state and local taxes not included.

JANUARY 1, 2012 - APRIL 29, 2012
NOVEMBER 5, 2012 - DECEMBER 31, 2012

Weekday

\$193 Per Person, Per Day
Single Occupancy

\$162 Per Person, Per Day
Double Occupancy

Weekend

\$225 Per Person, Per Day
Single Occupancy

\$183 Per Person, Per Day
Double Occupancy

Food and beverage gratuities included. All state and local taxes not included.

